

Low Voltage Track System Module ML26-GL840-19W-940



Light Output Ratio:	100.0%	
Luminaire Power:	18.88 W	
SHR Nominal:	1.25	Calculated using the TM5
SHR Maximum:	1.35	fine grid method.

C Range: 0 - 360DEG
C Interval: 15.0DEG
Test Speed: HIGH
Temperature: 25.3DEG
Operators: Jason
Test Date: 2020-05-06

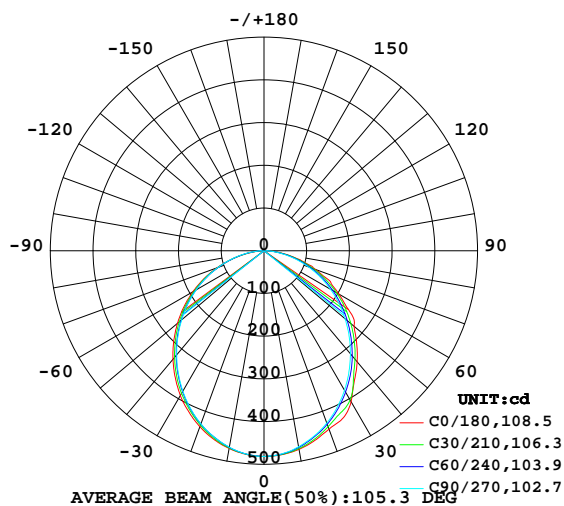
γ Range: 0 - 90DEG
γ Interval: 0.5DEG
Test System: EVERFINE GO-2000B_V1 SYSTEM V2.0.362
Humidity: 58%
Test Distance: 5.850m [K=1.0000]
Remarks:

LUMINAIRE PHOTOMETRIC TEST REPORT

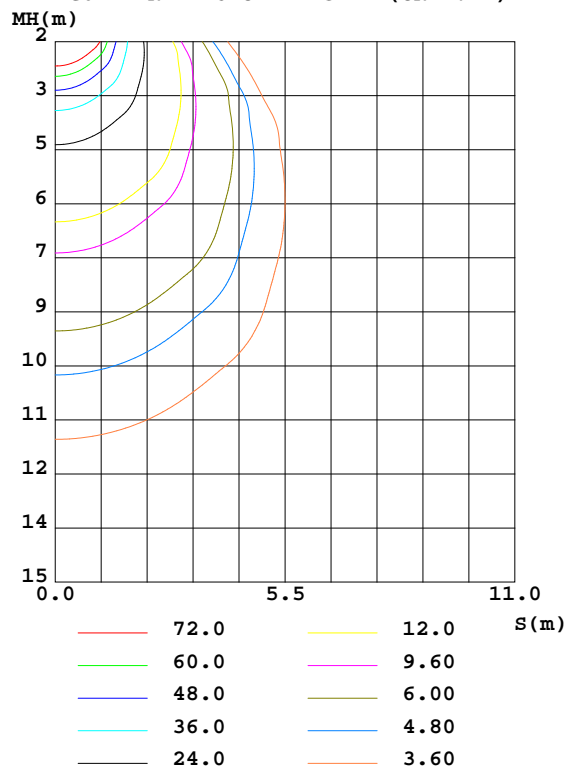
Test:U:48.00V I:0.3934A P:18.88W PF:1.000 Freq:0Hz Lamp Flux:1276.93x1 lm		
NAME: ML26-GL840-19W-940	TYPE:Low Voltage Track System	Serial No.:
SPEC.:4000K	DIM.: L840mm*W22mm*H43mm	
MFR.: NEKO LIGHTING AG		

DATA OF LAMP		PHOTOMETRIC DATA				Eff: 67.62 lm/W
MODEL	SAMSUNG-4000K	Imax(cd)	481.6	S/MH(C0/180)	1.21	
NOMINAL POWER(W)	26	LOR(%)	100.0	S/MH(C90/270)	1.18	
RATED VOLTAGE(V)	48	TOTAL FLUX(lm)	1276.9	η UP,DN(C0-180)	0.0,49.8	
NOMINAL FLUX(lm)	1276.93	CIE CLASS	DIRECT	η UP,DN(C180-360)	0.0,50.2	
LAMPS INSIDE	1	η up(%)	0.0	CIBSE SHR NOM	1.25	
TEST VOLTAGE(V)	48	η down(%)	100.0	CIBSE SHR MAX	1.35	

LUMINOUS INTENSITY DISTRIBUTION DIAGRAM



C0 PLANE ISOLUX DIAGRAM (UNIT:lx)



C Range: 0 - 360DEG
C Interval: 15.0DEG
Test Speed: HIGH
Temperature:25.3DEG
Operators:Jason
Test Date:2020-05-06

γ Range: 0 - 90DEG
 γ Interval: 0.5DEG
Test System:EVERFINE GO-2000B_V1 SYSTEM V2.0.362
Humidity:58%
Test Distance:5.850m [K=1.0000]
Remarks:

ZONAL FLUX DIAGRAM

ZONAL FLUX DIAGRAM:

γ	C0	C45	C90	C135	C180	C225	C270	C315	γ	Φ zone	Φ total	%lum, lamp
10	472.0	469.3	466.0	467.6	470.0	467.8	467.2	469.5	0- 10	45.34	45.34	3.55,3.55
20	444.7	435.4	429.5	431.5	438.5	432.4	431.5	436.4	10- 20	127.9	173.3	13.6,13.6
30	407.8	391.8	377.1	381.4	391.7	383.5	379.9	391.9	20- 30	190.4	363.6	28.5,28.5
40	339.2	328.8	314.8	321.2	331.5	322.4	318.1	337.3	30- 40	223.7	587.4	46,46
50	275.5	260.8	247.9	253.3	264.4	255.2	251.7	262.5	40- 50	225.4	812.7	63.6,63.6
60	202.3	191.5	179.3	183.0	192.4	185.3	183.4	193.3	50- 60	200.4	1013	79.3,79.3
70	128.2	120.1	110.8	111.0	116.8	114.1	114.4	122.7	60- 70	151.5	1165	91.2,91.2
80	55.50	52.65	46.39	44.25	45.07	46.76	50.07	54.73	70- 80	87.08	1252	98,98
90	4.955	5.357	3.787	2.160	0.6166	2.528	4.478	5.508	80- 90	25.25	1277	100,100
100									90-100			
110									100-110			
120									110-120			
130									120-130			
140									130-140			
150									140-150			
160									150-160			
170									160-170			
180									170-180			
DEG	LUMINOUS INTENSITY:cd									UNIT:lm		

Conical surface Flux(90deg): 701.56 lm

%lum = 54.9%

%lamp = 54.9%

Conical surface Flux(120deg): 1013.1 lm

%lum = 79.3%

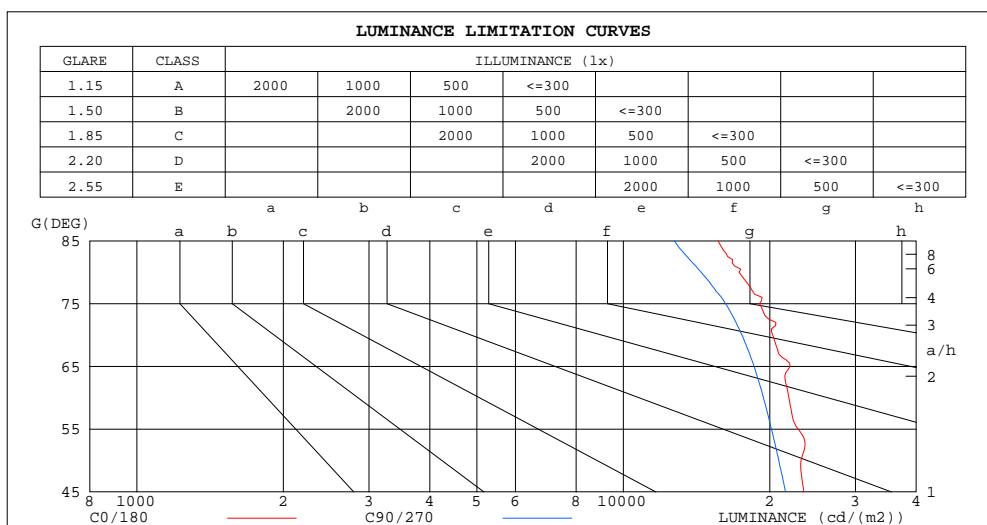
%lamp = 79.3%

C Range: 0 - 360DEG
C Interval: 15.0DEG
Test Speed: HIGH
Temperature:25.3DEG
Operators:Jason
Test Date:2020-05-06

γ Range: 0 - 90DEG
γ Interval: 0.5DEG
Test System:EVERFINE GO-2000B_V1 SYSTEM V2.0.362
Humidity:58%
Test Distance:5.850m [K=1.0000]
Remarks:

LUMINANCE LIMITATION CURVES

Test:U:48.00V I:0.3934A P:18.88W PF:1.000 Freq:0Hz Lamp Flux:1276.93x1 lm		
NAME: ML26-GL840-19W-940	TYPE:Low Voltage Track System	Serial No.:
SPEC.:4000K	DIM.: L840mm*W22mm*H43mm	
MFR.: NEKO LIGHTING AG		



LUMINANCE cd/(m2)		
G(DEG)	C0/180	C90/270
85	15667	12726
80	17294	14457
75	19051	16218
70	20282	17528
65	22000	18568
60	21891	19410
55	22874	20157
50	23194	20866
45	23495	21551

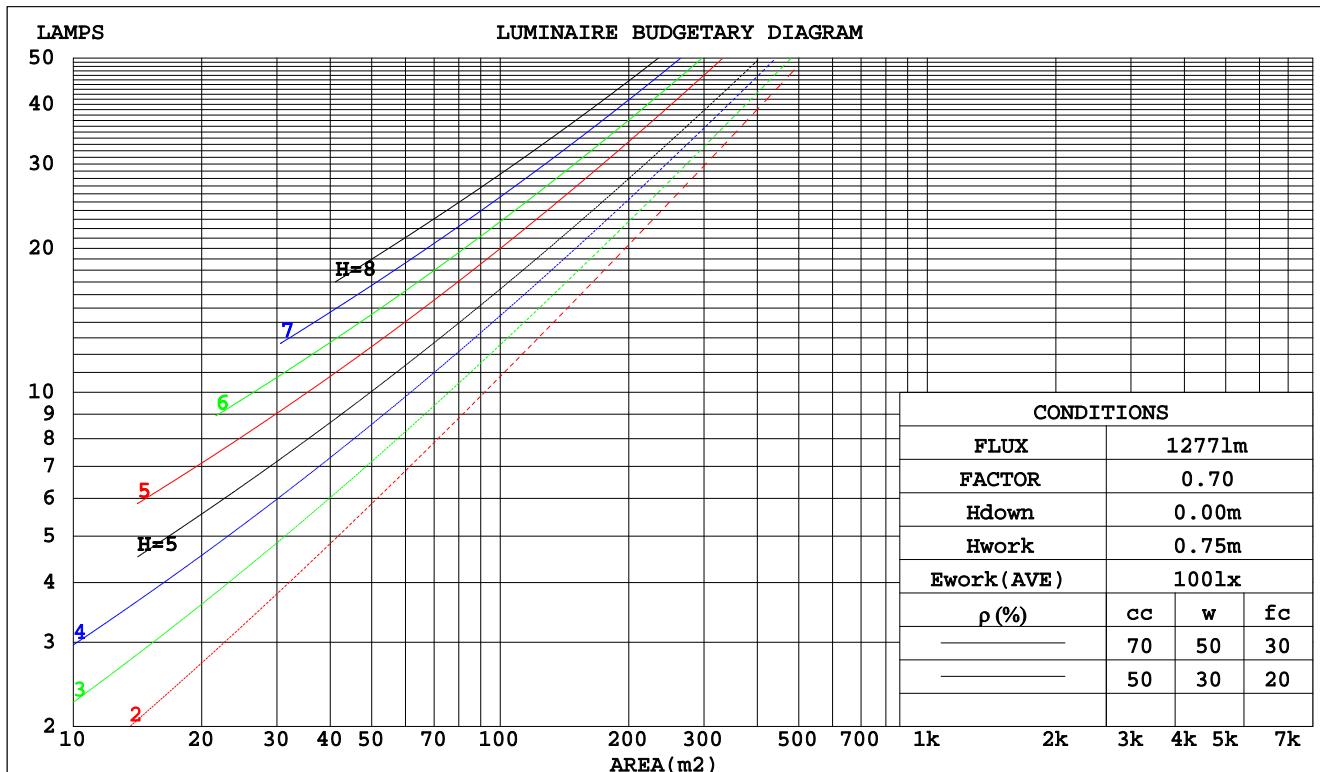
C Range: 0 - 360DEG
C Interval: 15.0DEG
Test Speed: HIGH
Temperature:25.3DEG
Operators:Jason
Test Date:2020-05-06

γ Range: 0 - 90DEG
γ Interval: 0.5DEG
Test System:EVERFINE GO-2000B_V1 SYSTEM V2.0.362
Humidity:58%
Test Distance:5.850m [K=1.0000]
Remarks:

CU AND LUMINAIRE BUDGETARY ESTIMATE DIAGRAM

Test:U:48.00V I:0.3934A P:18.88W PF:1.000 Freq:0Hz Lamp Flux:1276.93x1 lm		
NAME: ML26-GL840-19W-940	TYPE:Low Voltage Track System	SERIAL No.:
SPEC.:4000K	DIM.: L840mm*W22mm*H43mm	
MFR.: NEKO LIGHTING AG		

pcc	80%			70%			50%			30%			10%			0
pw	50%	30%	10%	50%	30%	10%	50%	30%	10%	50%	30%	10%	50%	30%	10%	0
pfc	20%			20%			20%			20%			20%			0
RCR	Coefficients of Utilization(CU)															
0.0	1.19	1.19	1.19	1.16	1.16	1.16	1.11	1.11	1.11	1.06	1.06	1.06	1.02	1.02	1.02	1.00
1.0	1.04	.00	.96	1.02	.98	.94	.97	.94	.91	.94	.91	.89	.90	.88	.86	.84
2.0	.91	.84	.78	.89	.83	.77	.85	.80	.75	.82	.78	.74	.79	.75	.72	.70
3.0	.80	.72	.65	.78	.71	.65	.75	.69	.63	.72	.67	.62	.70	.65	.61	.59
4.0	.71	.62	.55	.69	.61	.55	.67	.60	.54	.65	.58	.53	.62	.57	.53	.51
5.0	.63	.54	.48	.62	.54	.47	.60	.53	.47	.58	.52	.46	.56	.51	.46	.44
6.0	.57	.48	.42	.56	.48	.42	.54	.47	.41	.53	.46	.41	.51	.45	.40	.38
7.0	.52	.43	.37	.51	.43	.37	.49	.42	.37	.48	.41	.36	.47	.41	.36	.34
8.0	.47	.39	.33	.47	.39	.33	.45	.38	.33	.44	.37	.33	.43	.37	.32	.30
9.0	.43	.35	.30	.43	.35	.30	.42	.35	.30	.41	.34	.29	.40	.34	.29	.27
10.0	.40	.32	.27	.40	.32	.27	.39	.32	.27	.38	.31	.27	.37	.31	.27	.25



C Range: 0 - 360DEG
C Interval: 15.0DEG
Test Speed: HIGH
Temperature:25.3DEG
Operators:Jason
Test Date:2020-05-06

γ Range: 0 - 90DEG
γ Interval: 0.5DEG
Test System:EVERFINE GO-2000B_V1 SYSTEM V2.0.362
Humidity:58%
Test Distance:5.850m [K=1.0000]
Remarks:

WEC AND CCEC

Test:U:48.00V I:0.3934A P:18.88W PF:1.000 Freq:0Hz Lamp Flux:1276.93x1 lm		
NAME: ML26-GL840-19W-940	TYPE:Low Voltage Track System	Serial No.:
SPEC.:4000K	DIM.: L840mm*W22mm*H43mm	
MFR.: NEKO LIGHTING AG		

pcc	80%			70%			50%			30%			10%			0	
pw	50%	30%	10%	50%	30%	10%	50%	30%	10%	50%	30%	10%	50%	30%	10%	0	
pfc	20%			20%			20%			20%			20%			0	
RCR	RCR:Room Cavity Ratio						Wall Exitance Coefficients(WEC)										
0.0																	
1.0	.307	.175	.055	.300	.171	.054	.287	.165	.053	.275	.158	.051	.264	.153	.049		
2.0	.289	.158	.049	.283	.156	.048	.271	.151	.047	.260	.146	.046	.250	.141	.045		
3.0	.267	.142	.043	.262	.140	.042	.251	.136	.041	.242	.133	.041	.233	.129	.040		
4.0	.247	.128	.038	.242	.127	.037	.233	.123	.037	.224	.120	.036	.216	.118	.036		
5.0	.228	.116	.034	.224	.115	.033	.216	.112	.033	.208	.110	.033	.201	.107	.032		
6.0	.212	.106	.030	.208	.105	.030	.201	.103	.030	.194	.101	.030	.188	.099	.029		
7.0	.197	.097	.028	.194	.096	.027	.187	.095	.027	.181	.093	.027	.176	.091	.027		
8.0	.184	.090	.025	.181	.089	.025	.175	.088	.025	.170	.086	.025	.165	.085	.025		
9.0	.173	.084	.023	.170	.083	.023	.165	.081	.023	.160	.080	.023	.155	.079	.023		
10.0	.162	.078	.022	.160	.077	.022	.155	.076	.021	.151	.075	.021	.147	.074	.021		

pcc	80%			70%			50%			30%			10%			0
pw	50%	30%	10%	50%	30%	10%	50%	30%	10%	50%	30%	10%	50%	30%	10%	0
pfc	20%			20%			20%			20%			20%			0
RCR	RCR:Room Cavity Ratio						Ceiling Cavity Exitance Coefficients(CCEC)									
0.0	.190	.190	.190	.163	.163	.163	.111	.111	.111	.064	.064	.064	.020	.020	.020	
1.0	.180	.156	.135	.154	.134	.116	.105	.092	.080	.061	.053	.047	.019	.017	.015	
2.0	.172	.132	.098	.147	.114	.085	.101	.079	.059	.058	.046	.035	.019	.015	.011	
3.0	.164	.114	.075	.141	.099	.065	.096	.068	.045	.056	.040	.027	.018	.013	.009	
4.0	.156	.101	.059	.134	.087	.051	.092	.061	.036	.053	.036	.021	.017	.012	.007	
5.0	.149	.090	.048	.128	.078	.041	.088	.055	.029	.051	.032	.017	.016	.010	.006	
6.0	.142	.082	.039	.122	.071	.034	.084	.050	.024	.049	.029	.014	.016	.010	.005	
7.0	.135	.075	.033	.116	.065	.029	.080	.046	.021	.047	.027	.012	.015	.009	.004	
8.0	.128	.069	.029	.110	.060	.025	.076	.042	.018	.044	.025	.011	.014	.008	.004	
9.0	.122	.064	.025	.105	.056	.022	.073	.039	.016	.043	.023	.009	.014	.008	.003	
10.0	.117	.060	.023	.101	.052	.020	.070	.037	.014	.041	.022	.008	.013	.007	.003	

C Range: 0 - 360DEG
C Interval: 15.0DEG
Test Speed: HIGH
Temperature:25.3DEG
Operators:Jason
Test Date:2020-05-06

γ Range: 0 - 90DEG
γ Interval: 0.5DEG
Test System:EVERFINE GO-2000B_V1 SYSTEM V2.0.362
Humidity:58%
Test Distance:5.850m [K=1.0000]
Remarks:

UGR(Unified Glare Rating) Table

Test:U:48.00V I:0.3934A P:18.88W PF:1.000 Freq:0Hz Lamp Flux:1276.93x1 lm										
NAME: ML26-GL840-19W-940					TYPE:Low Voltage Track SystemSerial No.:					
SPEC.:4000K					DIM.: L840mm*W22mm*H43mm					
MFR.: NEKO LIGHTING AG										
ceiling/cavity	0.7	0.7	0.5	0.5	0.3	0.7	0.7	0.5	0.5	0.3
walls	0.5	0.3	0.5	0.3	0.3	0.5	0.3	0.5	0.3	0.3
working plane	0.2	0.2	0.2	0.2	0.2	0.2	0.2	0.2	0.2	0.2
Room dimensions	Viewed crosswise					Viewed endwise				
x = 2H y = 2H	22.9	24.4	23.1	24.6	24.8	22.4	23.9	22.6	24.1	24.3
3H	24.5	25.9	24.8	26.1	26.3	23.8	25.2	24.1	25.4	25.7
4H	25.1	26.4	25.4	26.7	26.9	24.4	25.7	24.7	26.0	26.2
6H	25.6	26.8	25.9	27.1	27.4	24.8	26.0	25.1	26.3	26.6
8H	25.7	26.9	26.1	27.2	27.5	24.9	26.1	25.3	26.4	26.7
12H	25.8	27.0	26.2	27.3	27.6	25.0	26.2	25.4	26.5	26.8
4H 2H	23.4	24.7	23.7	25.0	25.3	23.0	24.3	23.3	24.6	24.9
3H	25.2	26.4	25.5	26.6	27.0	24.7	25.8	25.0	26.1	26.4
4H	26.0	27.0	26.3	27.3	27.7	25.4	26.4	25.7	26.7	27.1
6H	26.6	27.5	27.0	27.9	28.2	25.9	26.8	26.3	27.2	27.6
8H	26.8	27.7	27.2	28.0	28.4	26.1	27.0	26.5	27.3	27.7
12H	26.9	27.7	27.4	28.1	28.5	26.2	27.0	26.6	27.4	27.8
8H 4H	26.2	27.1	26.6	27.5	27.8	25.7	26.6	26.1	26.9	27.3
6H	27.0	27.7	27.4	28.1	28.5	26.4	27.1	26.8	27.5	27.9
8H	27.3	27.9	27.7	28.3	28.8	26.6	27.3	27.1	27.7	28.2
12H	27.5	28.1	28.0	28.5	29.0	26.9	27.4	27.3	27.9	28.3
12H 4H	26.2	27.0	26.6	27.4	27.8	25.7	26.5	26.1	26.9	27.3
6H	27.0	27.7	27.5	28.1	28.5	26.5	27.1	26.9	27.5	28.0
8H	27.4	27.9	27.8	28.4	28.9	26.8	27.3	27.2	27.8	28.2
Variations with the observer position at spacings:										
S = 1.0H	+ 0.2 / - 0.2					+ 0.2 / - 0.2				
1.5H	+ 0.2 / - 0.3					+ 0.2 / - 0.3				
2.0H	+ 0.2 / - 0.3					+ 0.2 / - 0.3				

CIE Pub.117, 1277 lm Total Lamp Luminous Flux Correct ($8\log(F/F_0) = 0.8$)

C Range: 0 - 360DEG
C Interval: 15.0DEG
Test Speed: HIGH
Temperature:25.3DEG
Operators:Jason
Test Date:2020-05-06

γ Range: 0 - 90DEG
 γ Interval: 0.5DEG
Test System:EVERFINE GO-2000B_V1 SYSTEM V2.0.362
Humidity:58%
Test Distance:5.850m [K=1.0000]
Remarks:

UTILIZATION FACTORS TABLE

Test:U:48.00V I:0.3934A P:18.88W PF:1.000 Freq:0Hz Lamp Flux:1276.93x1 lm		
NAME: ML26-GL840-19W-940	TYPE:Low Voltage Track System	Serial No.:
SPEC.:4000K	DIM.: L840mm*W22mm*H43mm	
MFR.: NEKO LIGHTING AG		

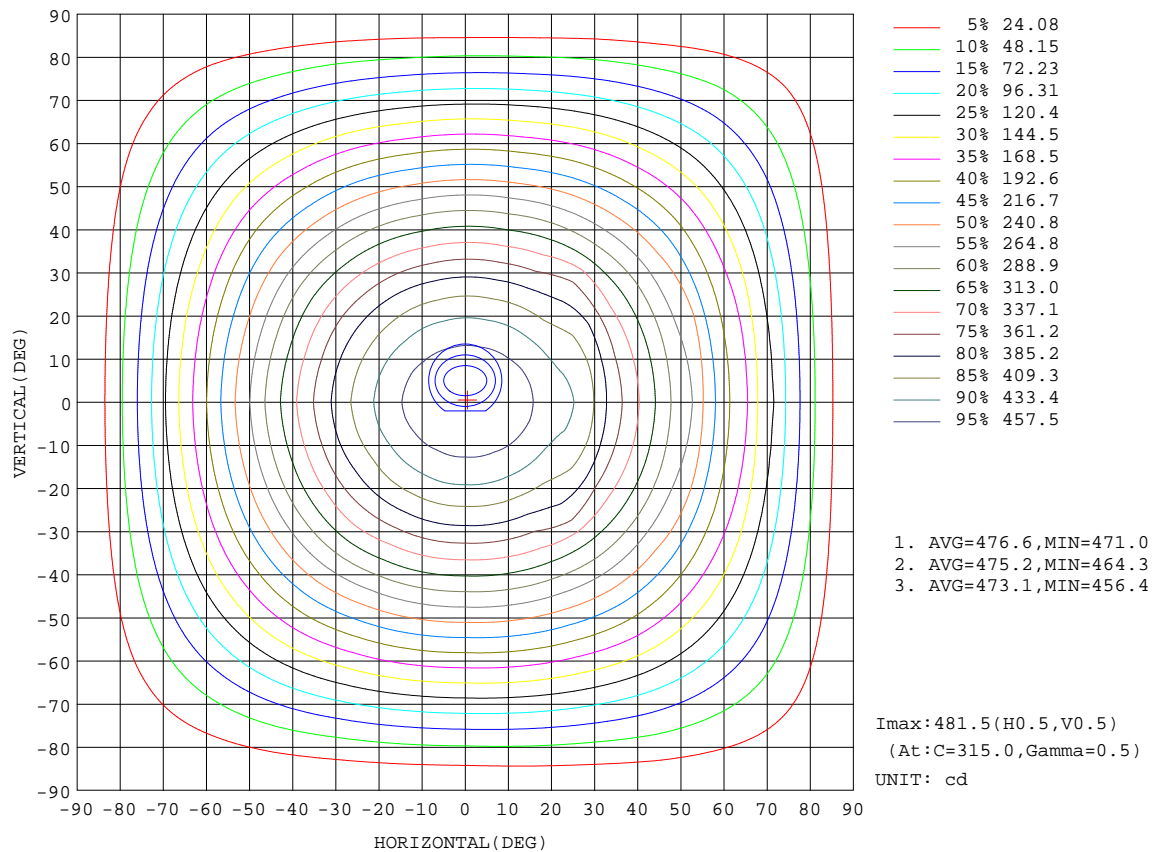
REFLECTANCE										
Ceiling	0.8	0.8	0.8	0.7	0.7	0.7	0.5	0.5	0.5	0
Walls	0.7	0.5	0.3	0.7	0.5	0.3	0.7	0.5	0.3	0
Working plane	0.2	0.2	0.2	0.2	0.2	0.2	0.2	0.2	0.2	0
ROOM INDEX	UTILIZATION FACTORS(PERCENT) k(RI) x RCR = 5									
k = 0.60	58	47	40	58	47	40	56	46	40	33
0.80	68	57	50	67	56	49	66	56	49	42
1.00	77	66	58	75	65	58	73	66	58	51
1.25	84	73	66	82	73	66	80	71	65	58
1.50	89	79	72	87	78	71	84	76	70	63
2.00	95	87	80	93	86	80	90	83	78	70
2.50	99	91	85	97	90	85	93	87	83	74
3.00	102	96	90	100	94	89	96	91	87	79
4.00	106	101	96	104	99	95	100	96	92	83
5.00	109	104	100	106	102	98	102	98	95	86
ROOM INDEX	UF(total)									Direct
According to DIN EN 13032-2 2004										
Suspended										
SHRNM = 1.25										

C Range: 0 - 360DEG
C Interval: 15.0DEG
Test Speed: HIGH
Temperature:25.3DEG
Operators:Jason
Test Date:2020-05-06

γ Range: 0 - 90DEG
 γ Interval: 0.5DEG
Test System:EVERFINE GO-2000B_V1 SYSTEM V2.0.362
Humidity:58%
Test Distance:5.850m [K=1.0000]
Remarks:

ISOCANDELA DIAGRAM

Test:U:48.00V I:0.3934A P:18.88W PF:1.000 Freq:0Hz Lamp Flux:1276.93x1 lm		
NAME: ML26-GL840-19W-940	TYPE:Low Voltage Track System	SERIAL No.:
SPEC.:4000K	DIM.: L840mm*W22mm*H43mm	
MFR.: NEKO LIGHTING AG		



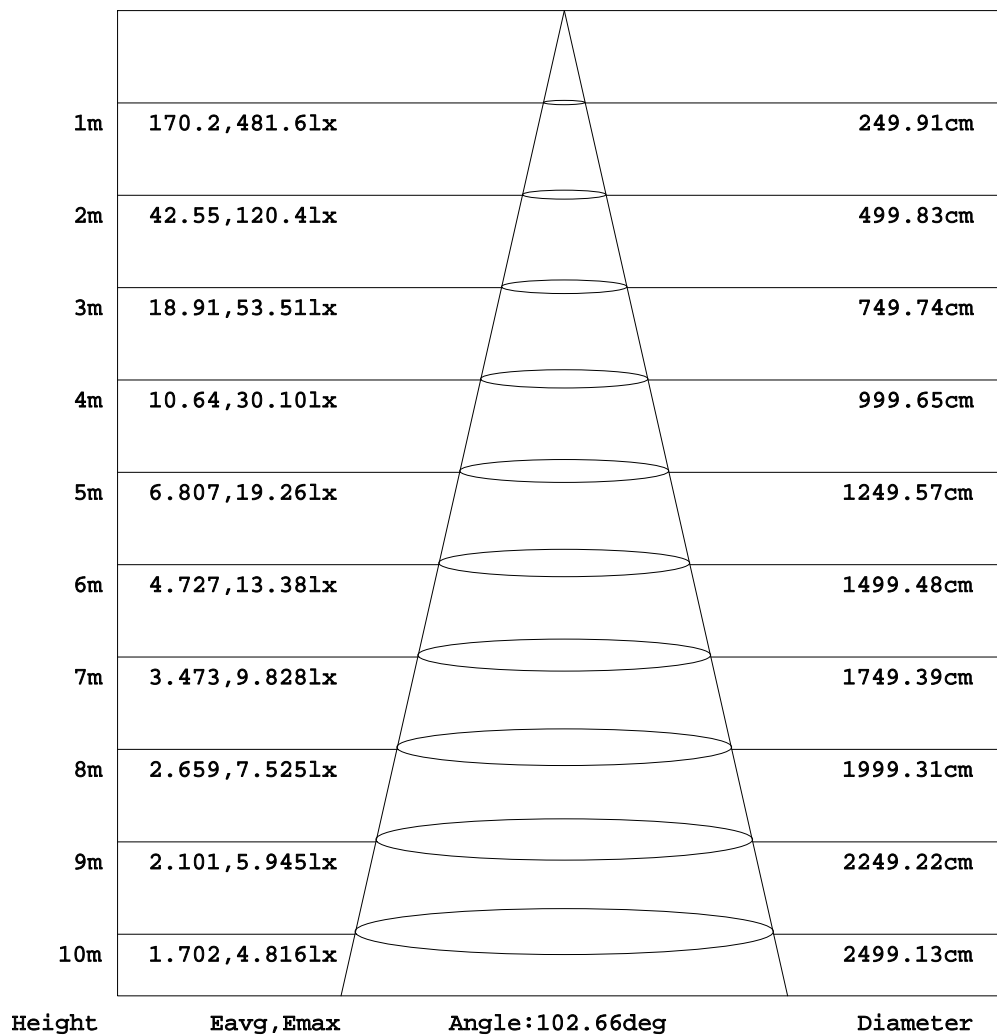
C Range: 0 - 360DEG
C Interval: 15.0DEG
Test Speed: HIGH
Temperature:25.3DEG
Operators:Jason
Test Date:2020-05-06

γ Range: 0 - 90DEG
γ Interval: 0.5DEG
Test System:EVERFINE GO-2000B_V1 SYSTEM V2.0.362
Humidity:58%
Test Distance:5.850m [K=1.0000]
Remarks:

AAI Figure

Test:U:48.00V I:0.3934A P:18.88W PF:1.000 Freq:0Hz Lamp Flux:1276.93x1 lm		
NAME: ML26-GL840-19W-940	TYPE:Low Voltage Track System	Serial No.:
SPEC.:4000K	DIM.: L840mm*W22mm*H43mm	
MFR.: NEKO LIGHTING AG		

Flux out:845.0 lm



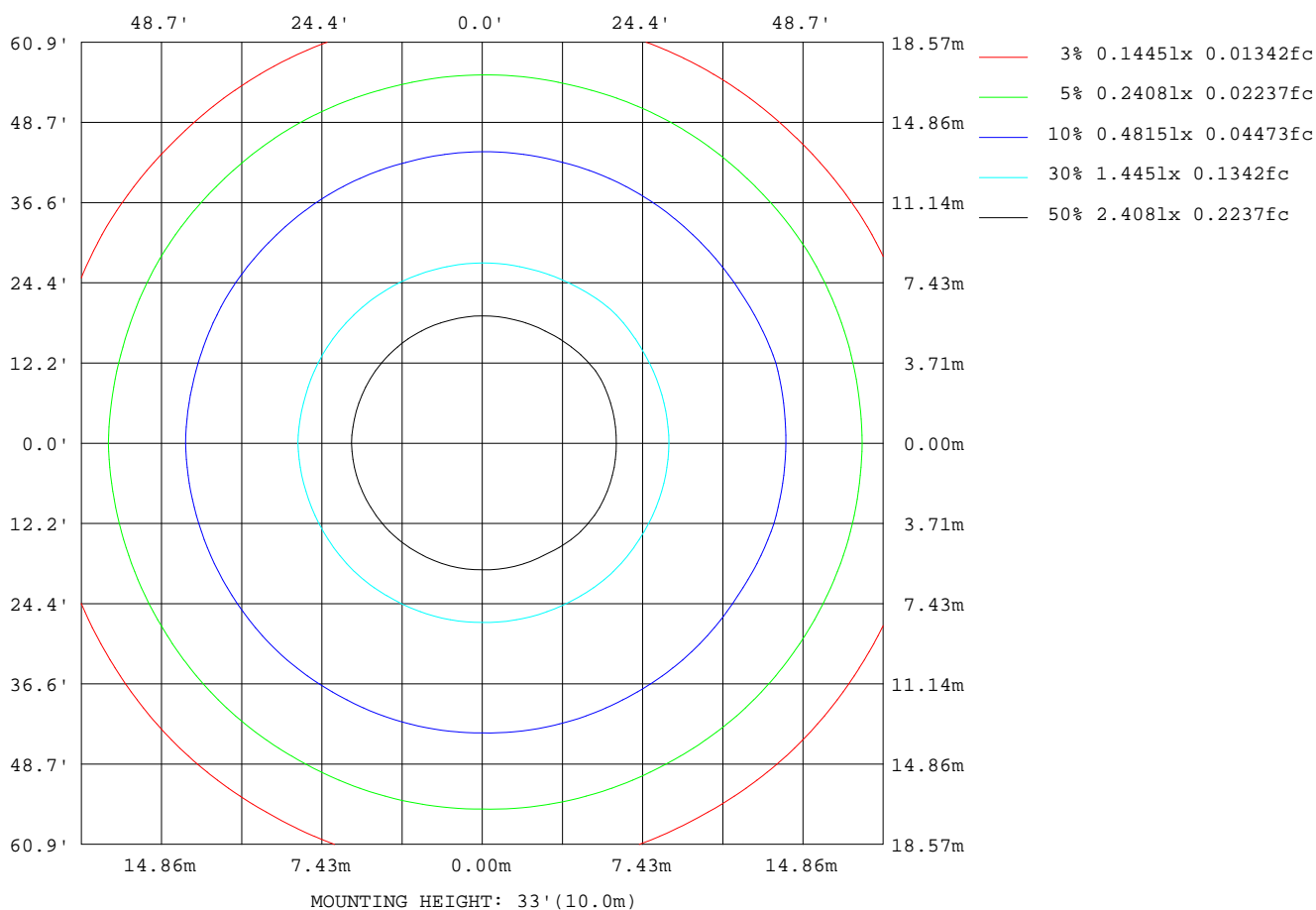
Note: The Curves indicate the illuminated area and the average illumination when the luminaire is at different distance.

C Range: 0 - 360DEG
C Interval: 15.0DEG
Test Speed: HIGH
Temperature: 25.3DEG
Operators: Jason
Test Date: 2020-05-06

γ Range: 0 - 90DEG
γ Interval: 0.5DEG
Test System: EVERFINE GO-2000B_V1 SYSTEM V2.0.362
Humidity: 58%
Test Distance: 5.850m [K=1.0000]
Remarks:

ISOLUX DIAGRAM

Test:U:48.00V I:0.3934A P:18.88W PF:1.000 Freq:0Hz Lamp Flux:1276.93x1 lm		
NAME: ML26-GL840-19W-940	TYPE:Low Voltage Track System	Serial No.:
SPEC.:4000K	DIM.: L840mm*W22mm*H43mm	
MFR.: NEKO LIGHTING AG		



C Range: 0 - 360DEG
C Interval: 15.0DEG
Test Speed: HIGH
Temperature:25.3DEG
Operators:Jason
Test Date:2020-05-06

γ Range: 0 - 90DEG
γ Interval: 0.5DEG
Test System:EVERFINE GO-2000B_V1 SYSTEM V2.0.362
Humidity:58%
Test Distance:5.850m [K=1.0000]
Remarks:

LED Avg.L Report

Test:U:48.00V I:0.3934A P:18.88W PF:1.000 Freq:0Hz Lamp Flux:1276.93x1 lm		
NAME: ML26-GL840-19W-940	TYPE:Low Voltage Track System	Serial No.:
SPEC.:4000K	DIM.: L840mm*W22mm*H43mm	
MFR.: NEKO LIGHTING AG		

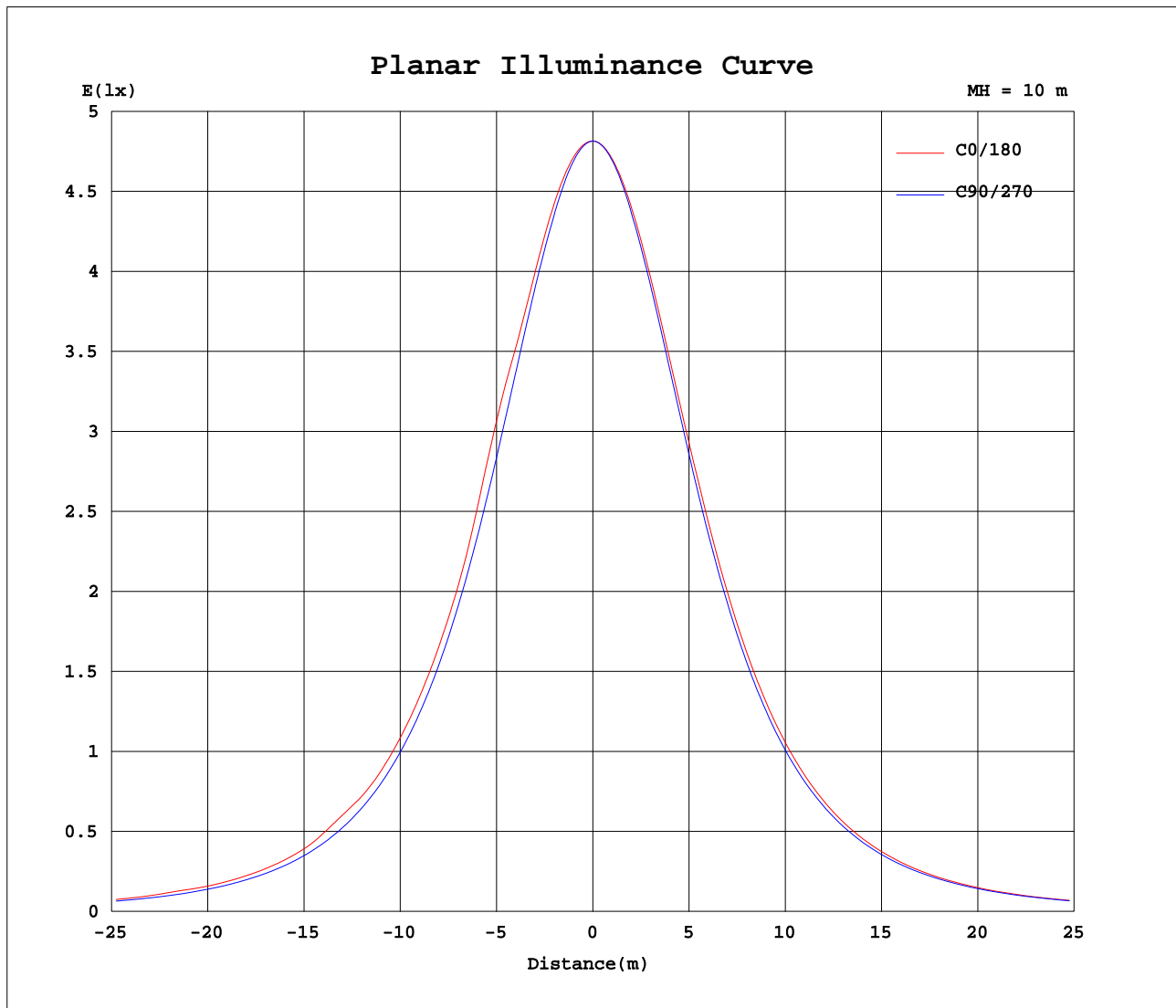
AvgL	cd/m2
L_0~180(65)av	20927
L_0~180(75)av	17852
L_0~180(85)av	13069
L_90~270(65)av	18834
L_90~270(75)av	16600
L_90~270(85)av	13168
L_45(65)av	19572
L_45(75)av	17196
L_45(85)av	13461

Standard: GB/T 29293-2012

C Range: 0 - 360DEG
C Interval: 15.0DEG
Test Speed: HIGH
Temperature:25.3DEG
Operators:Jason
Test Date:2020-05-06

γ Range: 0 - 90DEG
γ Interval: 0.5DEG
Test System:EVERFINE GO-2000B_V1 SYSTEM V2.0.362
Humidity:58%
Test Distance:5.850m [K=1.0000]
Remarks:

Planar Illuminance Curve



C Range: 0 - 360DEG
C Interval: 15.0DEG
Test Speed: HIGH
Temperature: 25.3DEG
Operators: Jason
Test Date: 2020-05-06

γ Range: 0 - 90DEG
 γ Interval: 0.5DEG
Test System: EVERFINE GO-2000B_V1 SYSTEM V2.0.362
Humidity: 58%
Test Distance: 5.850m [K=1.0000]
Remarks:

```

γ Range: 0 - 90DEG
γ Interval: 0.5DEG
Test System:EVERFINE GO-2000B_V1 SYSTEM V2.0.362
Humidity:58%
Test Distance:5.850m [K=1.0000]
Remarks:

```

```

γ Range: 0 - 90DEG
γ Interval: 0.5DEG
Test System:EVERFINE GO-2000B_V1 SYSTEM V2.0.362
Humidity:58%
Test Distance:5.850m [K=1.0000]
Remarks:

```